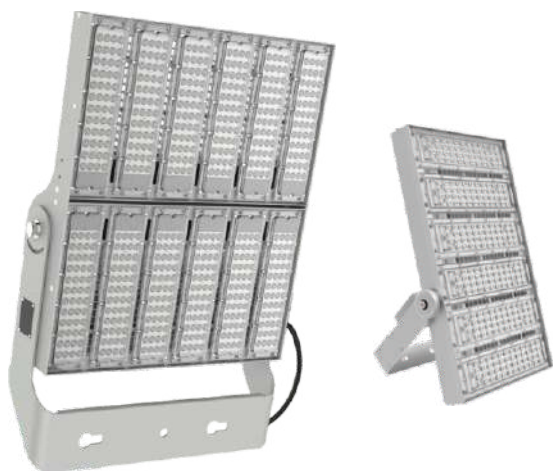


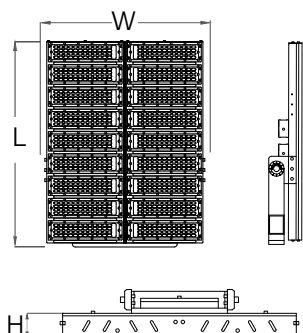
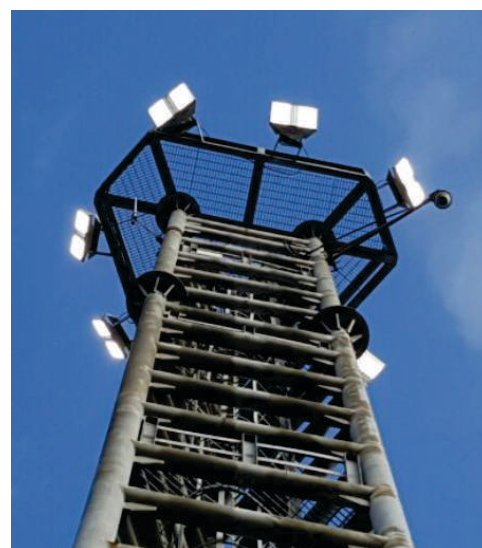
# K - FLOOD

BEST IN CLASS LIGHT  
QUALITY FOR AREA LIGHTING

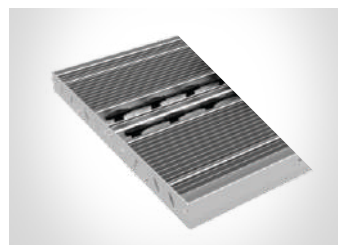


The K-FLOOD modular range of luminaires are built up using modules of 50W in multiples. The range on offer is from 100W to 900W suitable for sports halls, tunnels, stadiums, gas stations, area lighting, car parks etc.

Three different light distributions are available. The luminaire have an extruded anodized aluminium body & heat sink, polycarbonate lenses and an optical tightness of IP 66.



Angle adjustable bracket



Extruded aluminium heat sink



PC lens transmittance >90%

Input Power	W	Size W (mm)	H (mm)	Weight (Kg)	Rated Voltage (V)	Power Factor	ATHD	Input Frequency	Efficacy* (Lm/W)	CCT**	CRI
K-FLOOD 100W	320	212	87.5	3.2	240	>0.95	<10%	50Hz	120	WW/NW/CW	75
K-FLOOD 150W	320	250	93	3.9	240	>0.95	<10%	50Hz	120	WW/NW/CW	75
K-FLOOD 200W	320	340	92.5	4.6	240	>0.95	<10%	50Hz	120	WW/NW/CW	75
K-FLOOD 300W	320	485	93	6.0	240	>0.95	<10%	50Hz	120	WW/NW/CW	75
K-FLOOD 400W	694	385	155	10.5	240	>0.95	<10%	50Hz	140	WW/NW/CW	75
K-FLOOD 600W	704	543	160	14	240	>0.95	<10%	50Hz	140	WW/NW/CW	75
K-FLOOD 900W	975	545	162	21	240	>0.95	<10%	50Hz	140	WW/NW/CW	75

\* For NW/CW only.

\*\* WW: 3000K, NW: 4000K, CW: 5700K. Other CCTs also available on request



## Material & Finish

- Housing - Extruded aluminium
- Protector - Polycarbonate integrated lenses
- Paint - Anodised aluminium

IS 10322  
(Part 5/Sec 5):2013  
  
R-91003077  
www.bis.gov.in

IP66

IK10

5/10KV

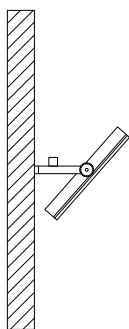
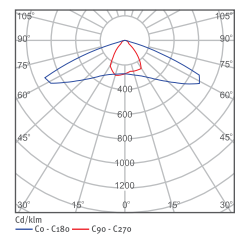
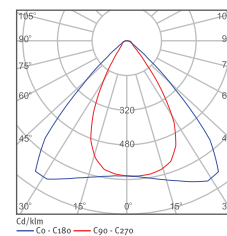
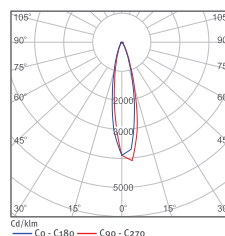


>50,000  
Hours  
L70

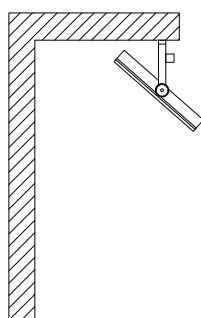
## Installation & Mounting

- Mounting with different degrees of inclination from  $-90^{\circ}$  to  $+90^{\circ}$  in step of  $10^{\circ}$
- Suitable for vertical/horizontal mount to pole and ceiling

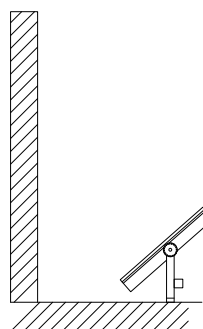
## Light Distribution



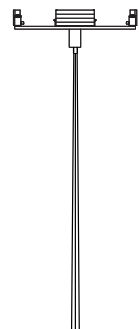
Wall mounted



Ceiling mounted



Surface mounted



High Mast

Manufacturing:  
Kesslec Smart Lighting Technologies Private Limited  
(Formerly Keselec Lighting Private Limited )  
Plot no 55 Industrial Area | N.I.T  
Faridabad - 121001 | Haryana | India  
E-mail: info@kesslec.com

**Kesslec** 